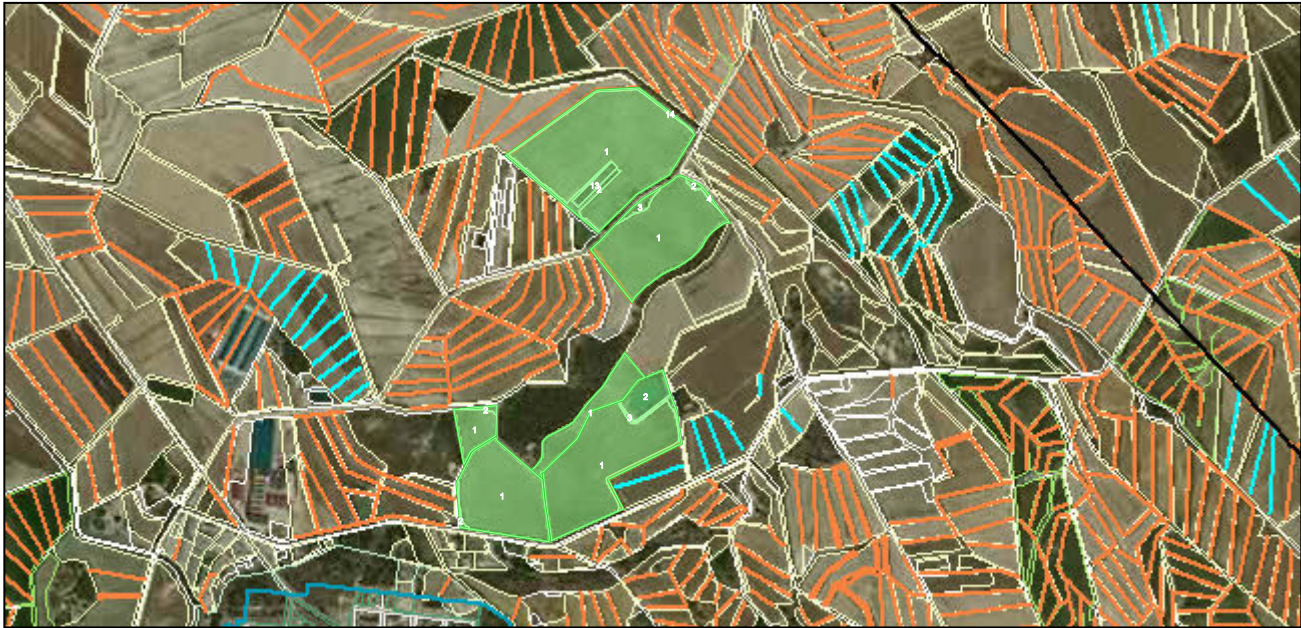


ETRS-89 UTM-30 N (m) :  
x=616.708  
y=4.687.883

<http://sigpac.navarra.es>

Escala 1:17.558



SIGPAC 2022 corregido + Ortofoto 1:5.000

© 2023 Gobierno de Navarra

ETRS-89 UTM-30 N (m) :  
x=619.714  
y=4.686.438

SIGPAC 2022 corregido